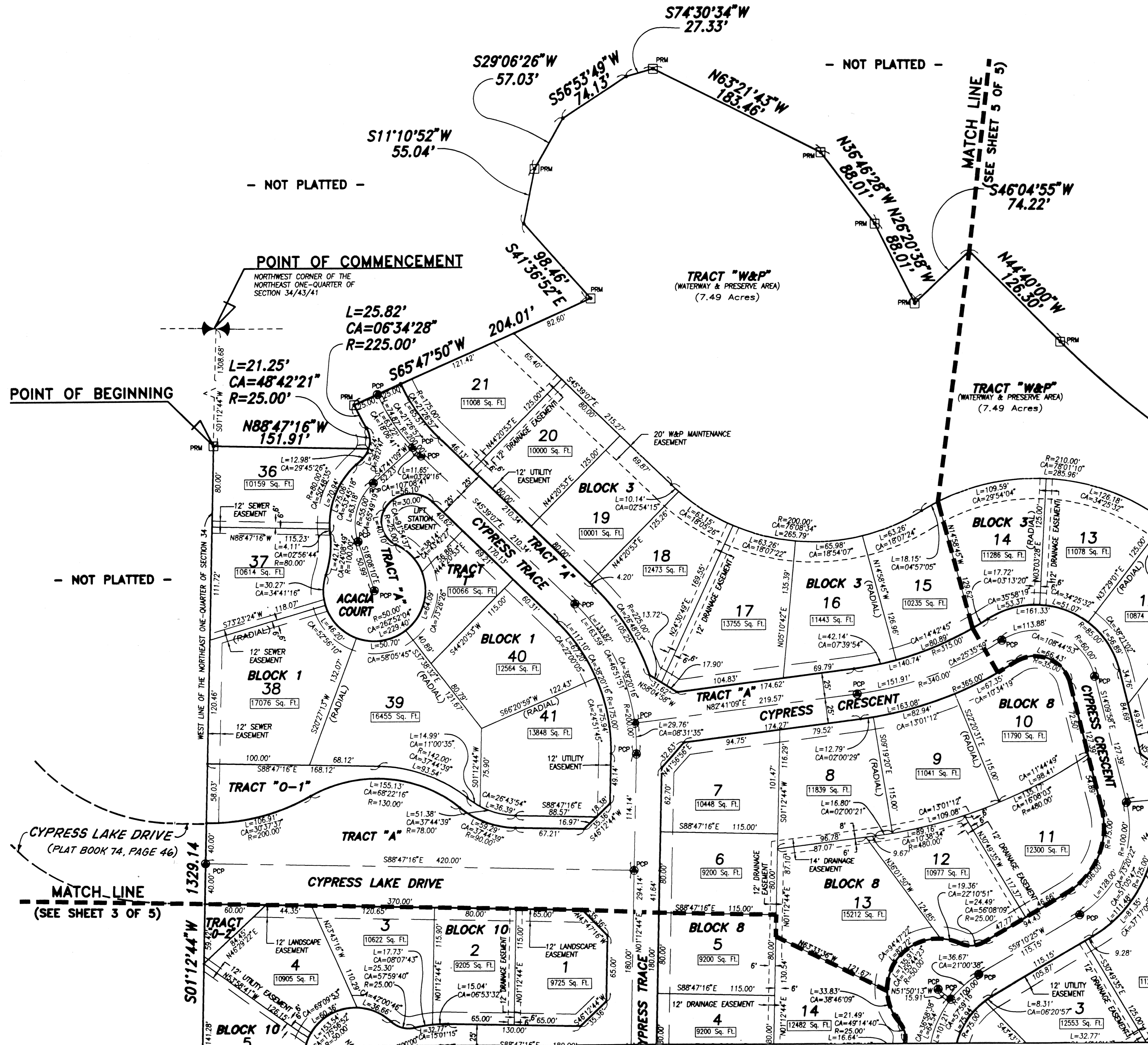
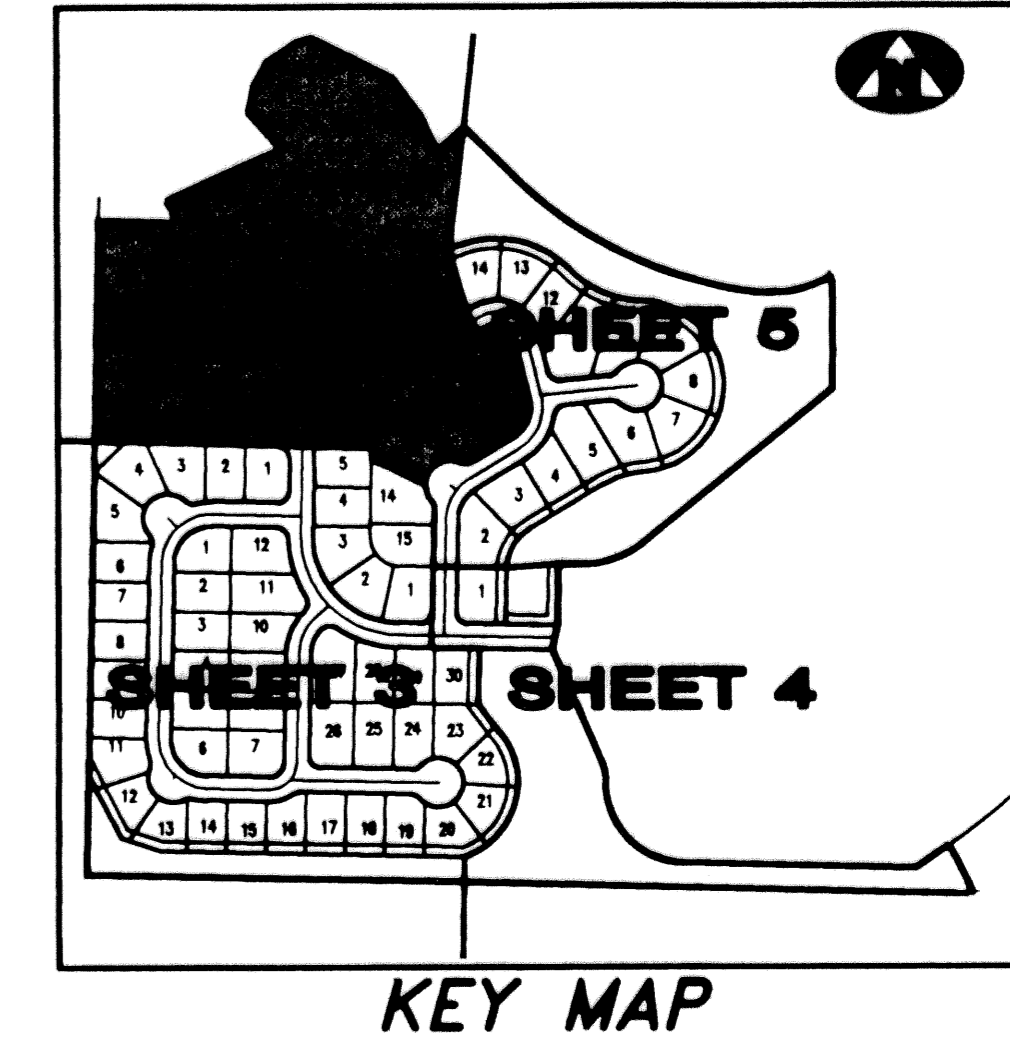
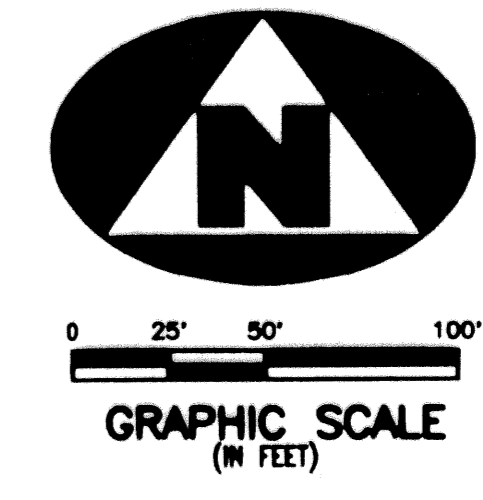


CYPRESS HEAD UNIT 2 PLAT 1

LYING IN SECTION 34, TOWNSHIP 43 SOUTH, RANGE 41 EAST, VILLAGE OF ROYAL PALM BEACH, PALM BEACH COUNTY, FLORIDA



- SURVEYOR'S NOTES AND LEGEND:**
- BEARINGS SHOWN OR STATED HEREON, ARE BASED ON, OR ARE RELATIVE TO THE BEARING OF SOUTH 01°12'44" WEST ALONG THE WEST LINE OF THE NORTHEAST ONE-QUARTER OF SECTION 34, TOWNSHIP 43 SOUTH, RANGE 41 EAST, PALM BEACH COUNTY, FLORIDA.
 - IN THOSE INSTANCES WHERE UTILITY/DRAINAGE STRUCTURES ARE CONSTRUCTED IN CONFLICT WITH THE PLATTED PERMANENT CONTROL POINTS (P.C.P.) POSITION, STRADDLERS MONUMENTED AS PERMANENT CONTROL POINTS WILL BE SET TO REFERENCE THE PLATTED P.C.P. POSITION.
 - LINE INTERSECTING CURVES ARE NON RADIAL UNLESS OTHERWISE NOTED.
 - W&P DENOTES WATERWAY AND PRESERVE AREA.
 - SQ. FT. DENOTES SQUARE FEET
 - C/L DENOTES A CENTERLINE
 - PRM DENOTES A SET #2424 PERMANENT REFERENCE MONUMENT (P.R.M.)
 - PCP DENOTES A SET #2424 PERMANENT CONTROL POINT (P.C.P.)

This instrument was prepared by Wm. R. Van Campen, R.L.S., in and for the offices of Bench Mark Land Surveying & Mapping, Inc., 4152 West Blue Heron Blvd., Suite 121, Riviera Beach, Florida
 Fax (407) 844-9659 Phone (407) 848-2102

BENCH MARK
 Land Surveying and Mapping, Inc.
 4152 West Blue Heron Blvd., Suite 121, Riviera Beach, FL 33404
 Fax (407) 844-9659 Phone (407) 848-2102

RECORD PLAT
CYPRESS HEAD
UNIT 2 PLAT 1

DWN	D.M.	FB	DATE	11/01/94	WO.#	P3
CKD	FILE	P3-A1.dwg	SCALE	1" = 50'	SHEET	2 OF 5

SUBDIVISION * Cypress Head Unit 2
 BOOK 74 PAGE 49
 FLOOD HAZARD ZONING
 SE ZIP CODE
 PUD NAME Y Royal Palm Bch